

Cylindrical μ Rwell Design

- First Pass -

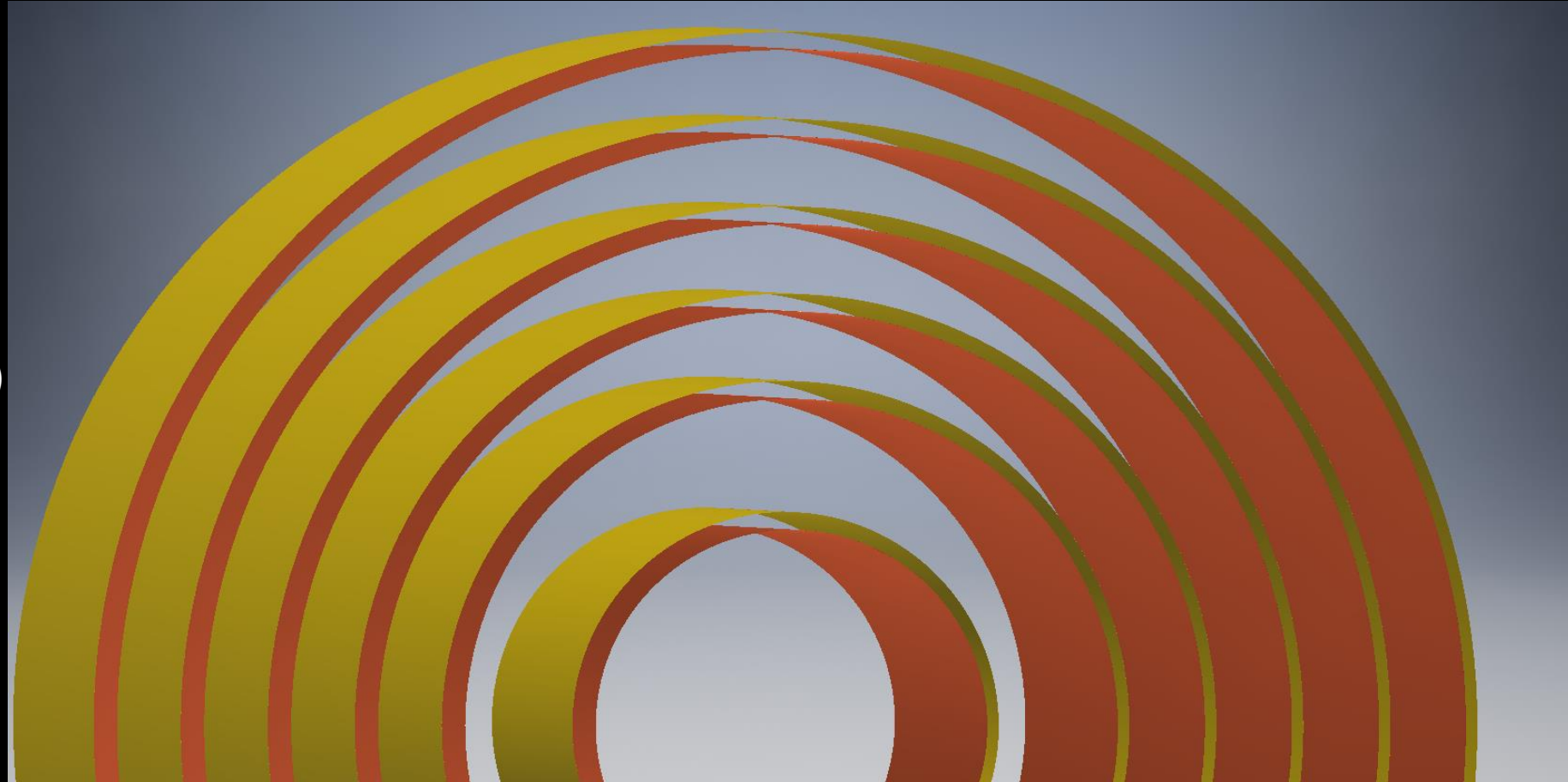
Jerry Collins, Marcus Hohlmann

Florida Institute of Technology

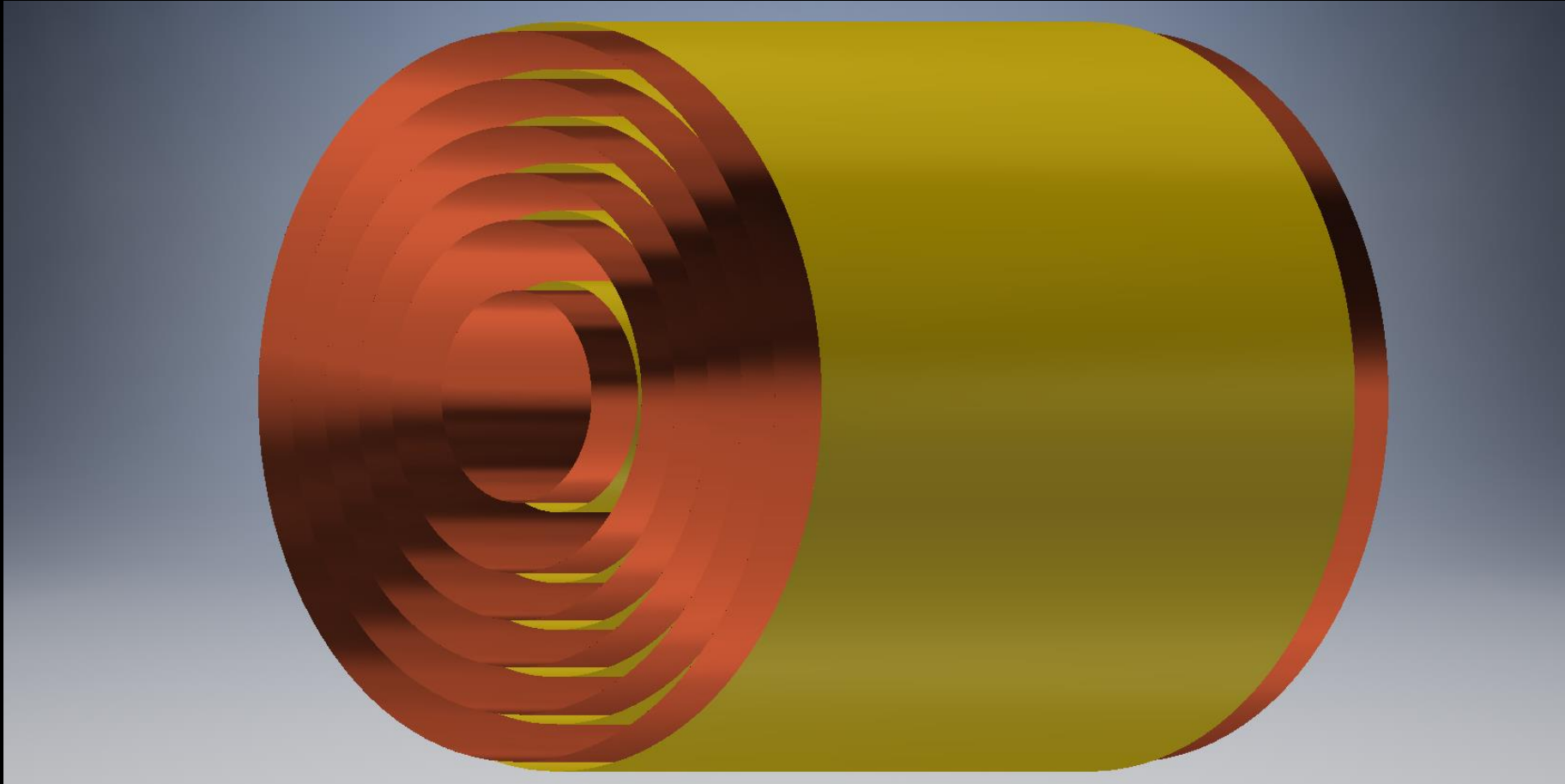
4/1/2019

μ Rwell Foils

- 6 sets of readouts and drifts
- Diameters(mm): 225, 375, 475, 575, 675, 775
- Depth 55cm for drifts
- Extra 6cm for readout on each side
- Drifts (gold), Readouts (copper)

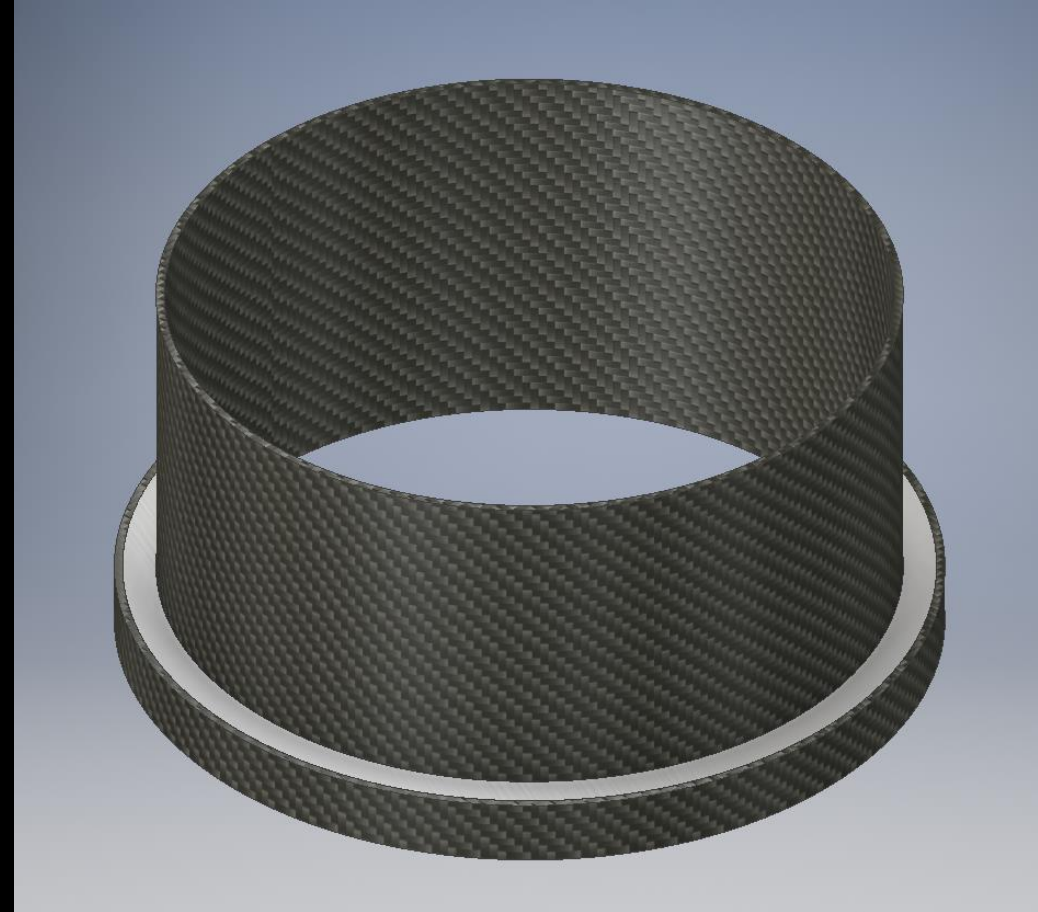


Angled View



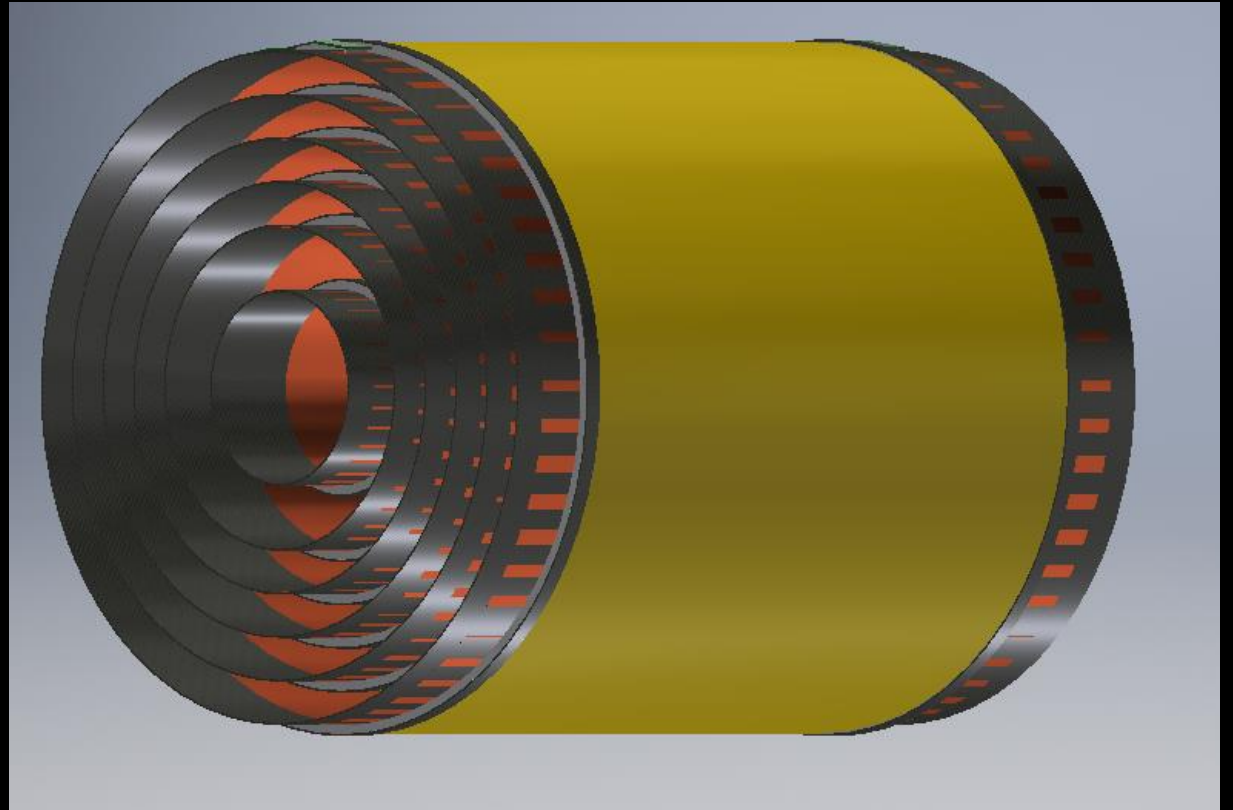
Drift Gap Frames

- Frames of varying sizes
- Attached to both sides
- Stylizes as carbon fiber
- Connects drift foils and readout foils
 - 2cm gap
 - 2cm depth for stretching screws



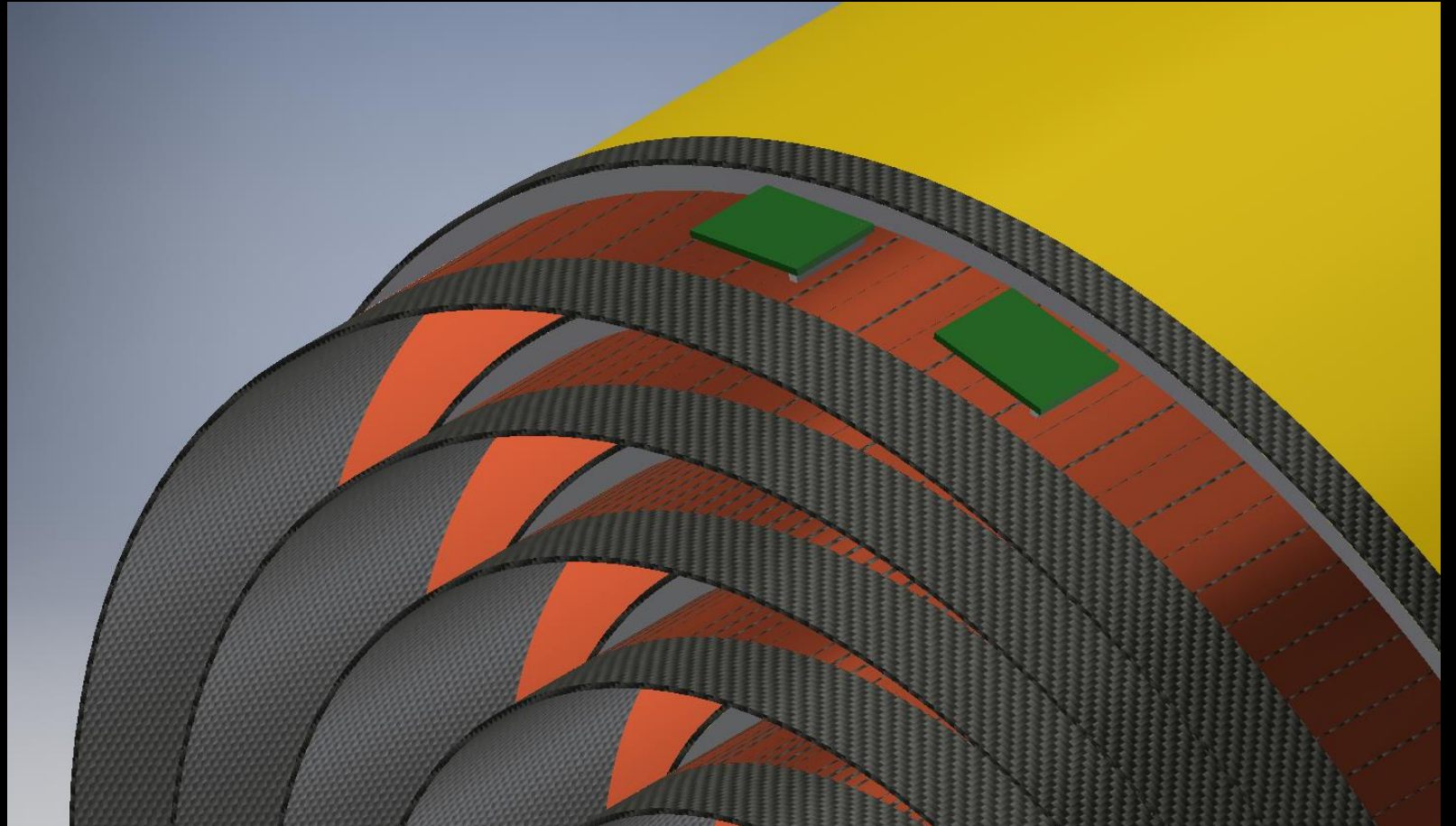
Frames Attached to Foils

- Drift gap frames are fixed over the ends
- 6cms of readout remain exposed
 - Solid, appears disconnected in render



Readout

- Readout electronics fixed to the exposed readout regions
- Applied to every layer

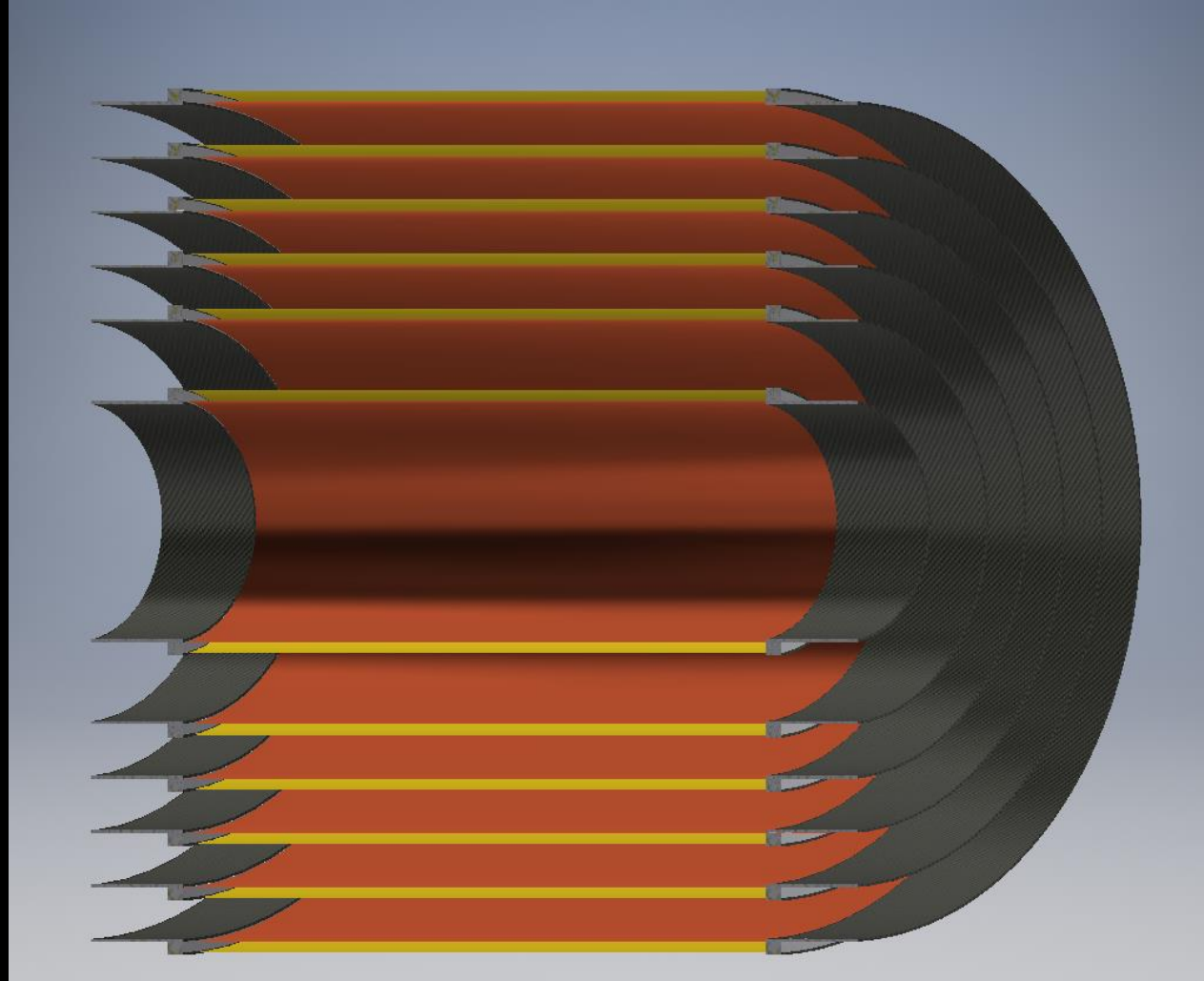


Layer Stack

- 2cm of readout and drift clamped by the drift gap frame
- Stretched taut by stretching screws in the inner medium

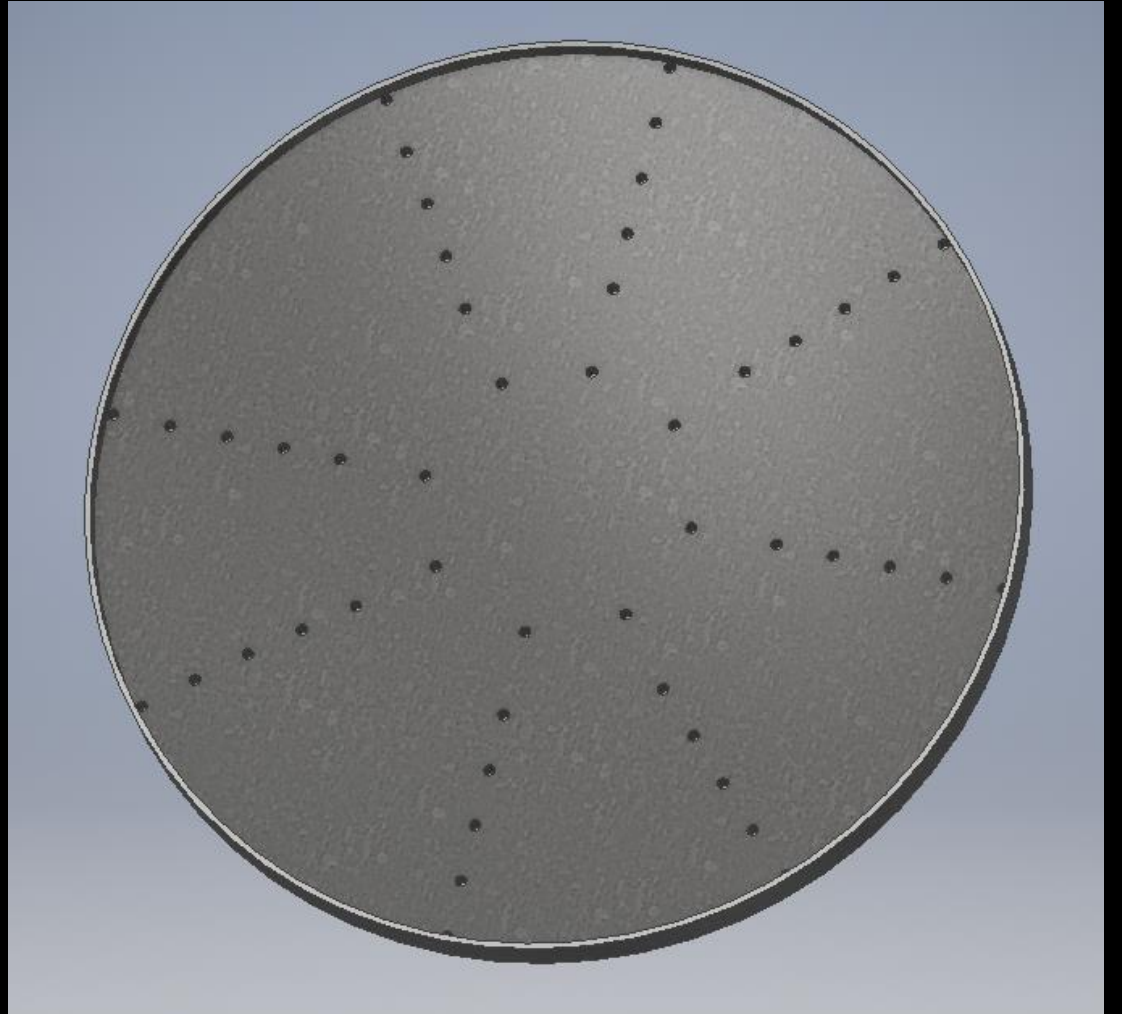


Slice-View



Endcap

- Endcap fixed with holes
- Long screws reach inner medium of each drift gap frame



Assembly Video

